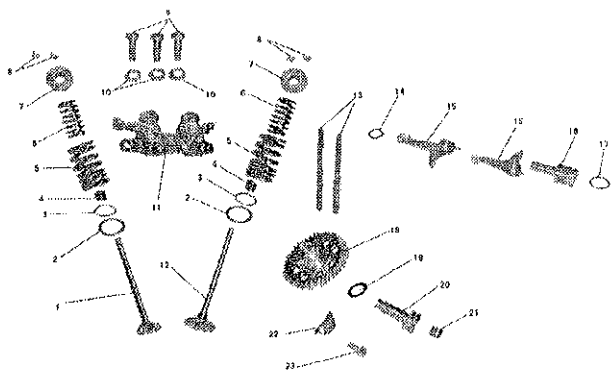


目 录

INDEX

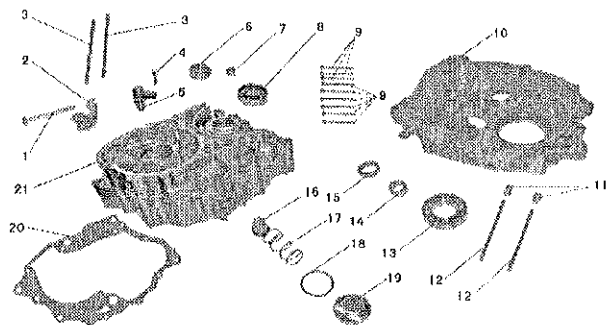
气缸盖总成	1	F-8 油箱 Fuel tank	21
配气系统	2	F-9 座垫 Seat	22
曲柄连杆	3	F-10.护板 Side cover.....	23
左右曲轴箱组合	4	F-11 消声器组件 Silencer assy.....	24
离合器	5	F-12 消声器 Muffler	25
换档机构	6	F-13 后碟刹总成 brake	26
左曲轴箱盖	7	F-14 脚踏 Step	27
化油器	8	F-15 单撑支架 Stand.....	28
右曲轴箱盖组件	9	F-16 平叉 Swingarm	29
电起动系统.....	10	F-17 后减震 Rear shock absorber	30
主副轴.....	11	F-18 后挡泥板 Rear fender	31
起动轴.....	12	F-19 电器 Wiring	32
F-1 把手 Handlebar	13	F-20 车架 Frame	33
F-2 方向柱 Steering stem	14	F-21 随车工具 TOOL	34
F-3 前挡泥板 Fender	15		
F-4 前减震 Front fork	16		
F-5 前碟刹 Rear brake panel	17		
F-6 前轮 Front wheel	18		
F-7 后轮 Rear wheel	19		
F-8 油箱 Fuel tank	20		

2 配气系统

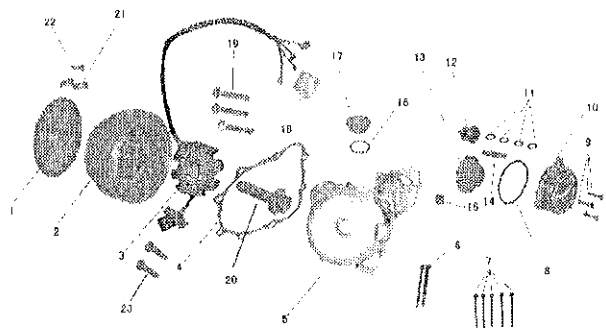


序号 Ref. No.	零部件代号 Part No.	零部件名称及规格 Description	数量 Qty	Description	备注 Remark
1	14301-00	排气门	1	Exhaust Valve	
2	14302-00	外簧下座	2	Low Set of Outer Spring	
3	14303-00	内簧下座	2	Low Set of Inner Spring	
4	14304-00	挡油罩	2	Seal, Valve	
5	14305-00	气门外弹簧	2	Valve Outer Spring	
6	14306-00	气门内弹簧	2	Valve Inner Spring	
7	14307-00	气门内、外弹簧座	2	Valve Inner&Outer Spring	
8	14308-00	气门锁夹	4	Valve Cone Half	
9	GB5782-86	螺栓	3	Bolt	
10	GB97.1-85	铜垫 $\phi 8$	3	Copper Pad $\phi 8$	
11	14401-00	上摇臂组件	1	Up Shaking Arm Assy.	
12	14309-00	进气门	1	Intake Valve	
13	14310-00	挺杆	2	Rod Guide	
14	14402-00	波形垫片	1	Wave Pad	
15	14403-00	下摇臂	2	Low Shaking Arm	
16	14404-00	下摇臂轴	1	Low Shaking Arm Shaft	
17	GB3452.1-82	O形圈	1	O-Ring	
18	14101-00	凸轮组件	1	Cam Gear Assy.	
19	GB97.1-85	垫圈	1	Washer	
20	14102-00	凸轮轴	1	Cam Gear Shaft	
21	GB97.1-85	垫圈	1	Washer	
22	14103-00	压簧	1	Spring	
23	14104-00	压板	1	Gland	
24	GB5782-86	螺栓 M6 \times 12	1	Bolt M6 \times 12	

4 左右曲轴箱组合

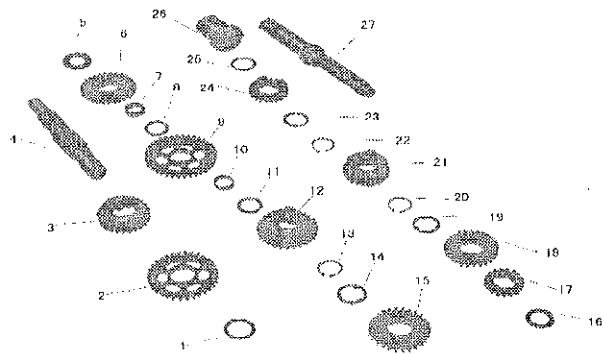


序号 Ref. No.	零部件代号 Part No.	零部件名称及规格 Description	数量 Qty	Description	备注 Remark
1	GB5782-86	螺栓 M6 × 60	1	Bolt M6 × 60	
2	11201-00	离合器拉筋定位板	1	Clutch Cable Firm Set	
3	90102-00	A 栓	2	Bolt A	
4	GB5782-86	螺栓 M6 × 25	1	Bolt M6 × 25	
5	11202-00	压销体	1	Pin	
6	GB276-89	滚动轴承 6202	1	Rolling Bearing 6202	
7	GB290-89	滚针轴承 HK1010	1	Needle Bearing HK1010	
8	GB276-89	滚动轴承 6204	1	Rolling Bearing 6204	
9	GB5782-86	螺栓 M6 × 50	9	Bolt M6 × 50	
10	11203-00	右曲轴箱体	1	Right Crankcase Body	
11	GB(119-86)	定位销 φ 10 × 14	2	Dowel Pin 10 × 14	
12	90103-00	B 栓	2	Bolt B	
13	GB276-89	滚动轴承 6006	1	Rolling Bearing 6006	
14	GB290-89	滚针轴承 HK1512	1	Needle Bearing HK1512	
15	GB290-89	滚针轴承 HK2110	1	Needle Bearing HK2110	
16	11101-00	机油滤网组合	1	Oil Filter Assy.	
17	11102-00	滤网弹簧	1	Filter Spring	
18	GB3452.1-821	O 形圈	1	O-Ring	
19	11103-00	滤网盖	1	Filter Cover	
20	90603-00	纸垫	1	Paper Pad	
21	11104-00	左曲轴箱体	1	Left Crankcase Body	
22	GB5782-86	螺栓 M6 × 95	1	Bolt M6 × 95	



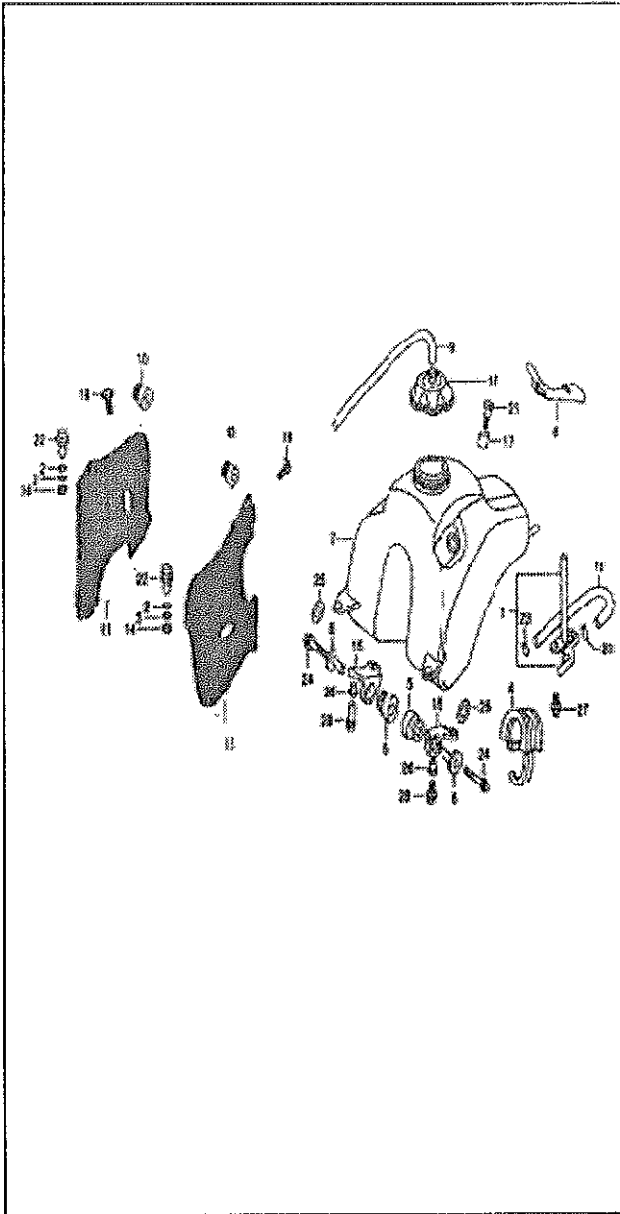
7 左曲轴箱盖

序号 Ref. No.	零部件代号 Part No.	零部件名称及规格 Description	数量 Qty	Description	备注 Remark
1	24401-00	起动大齿	1	Starting Gear	
2	31101-00	磁电机转子	1	Magneto Rotator	
3	31102-00	磁电机定子	1	Magneto Stator	
4	90607-00	纸垫	1	Paper Pad	
5	11301-00	左曲轴箱盖	1	Left Crankcase Cover	
6	GB5787-86	螺栓 M6 × 40	5	Bolt M6 × 40	
7	GB5787-86	螺栓 M6 × 50	2	Bolt M6 × 50	
8	91204-00	O形圈 φ 63 × 3	1	O-Ring 63 × 3	
9	GB5787-86	螺栓 M6 × 20	3	Bolt M6 × 20	
10	11303-00	电机盖	1	Motor Cover	
11	90608-00	垫圈 φ 10.5 × 0.5	1	Washer 10.5 × 0.5	
12	24101-00	小双联齿轮	1	Dual-connected Gear I	
13	24102-00	大双联齿轮	1	Dual-connected Gear II	
14	24103-00	双联齿轮轴	1	Shaft Dual-connected Gear	
15	GB290-89	滚针轴承 HK1010	1	Needle Bearing HK1010	
16	91205-00	O形圈 φ 13.8 × 2.5	1	O-Ring 13.8 × 2.5	
17	11304-00	视孔盖	1	Cover, Inspect Hole	
18	31103-00	接线盒	1	Connecting Case	
19	GB5787-86	螺栓 M5 × 25	3	Bolt M5 × 25	
20	GB5787-86	螺栓 M10 × 35	1	Bolt M10 × 35	
21	31104-00	压板	1	Cland	
22	GB5787-86	螺栓 M6 × 12	1	Bolt M6 × 12	
23	GB5787-86	螺栓 M5 × 16	2	Bolt M5 × 16	



11 主副轴

序号 Ref. No.	零部件代号 Part No.	零部件名称及规格 Description	数量 Qty	Description	备注 Remark
1	GB97.1-85	垫圈 $\phi 20 \times \phi 27 \times 1$	1	Washer $\phi 20 \times \phi 27 \times 1$	
2	22301-00	二档从动齿轮	1	Gear, 2nd Wheel	
3	22302-00	五档从动齿轮	1	Gear, 5th Wheel	
4	22201-00	副轴	1	Counter Shaft	
5	GB97.1-85	垫圈 $\phi 15 \times \phi 30 \times 1$	1	Washer $\phi 15 \times \phi 30 \times 1$	
6	22303-00	起动过桥齿轮	1	Starting Gear	
7	22304-00	衬套 C	1	Bush C	
8	GB97.1-85	垫圈 $\phi 16.5 \times \phi 24 \times 0.5$	1	Washer $\phi 16.5 \times \phi 24 \times 0.5$	
9	22305-00	一档从动齿轮	1	Gear, 1st Wheel	
10	22305-00	衬套 $\phi 16.5 \times \phi 19.5 \times 7$	1	Bush $\phi 16.5 \times \phi 19.5 \times 7$	
11	GB97.1-85	垫圈 $\phi 16.5 \times \phi 24 \times 0.5$	1	Washer $\phi 16.5 \times \phi 24 \times 0.5$	
12	22306-00	三档从动齿轮	1	Gear, 3rd Wheel	
13	22307-00	挡圈 $\phi 18$	1	Circlip $\phi 18$	
14	22308-00	花键垫圈 $\phi 26 \times 1.5$	1	Spline Washer $\phi 26 \times 1.5$	
15	22309-00	四档从动齿轮	1	Gear, 4th Wheel	
16	GB97.1-85	垫圈 $\phi 15 \times \phi 25 \times 1$	1	Washer $\phi 15 \times \phi 25 \times 1$	
17	22310-00	二档主动齿轮	1	Gear, 2nd Pinion	
18	22311-00	五档主动齿轮	1	Gear, 5th Pinion	
19	22312-00	花键垫圈 $\phi 26 \times 1.5$	1	Spline Washer $\phi 26 \times 1.5$	
20	22313-00	挡圈 $\phi 19$	1	Circlip $\phi 19$	
21	22314-00	四档主动齿轮	1	Gear, 4th Pinion	
22	22315-00	挡圈 $\phi 19$	1	Circlip $\phi 19$	
23	22316-00	花键垫圈 $\phi 26 \times 1.5$	1	Spline Washer $\phi 26 \times 1.5$	
24	22317-00	三档主动齿轮	1	Gear, 3rd Pinion	
25	GB97.1-85	垫圈 $\phi 20 \times \phi 27 \times 0.5$	1	Washer $\phi 20 \times \phi 27 \times 0.5$	
26	22318-00	起动齿轮组合	1	Starting Wheel Assy.	



F-8 油箱 Fuel tank

序号 Ref. No.	零部件代号 Part No.	零部件名称及规格 Description	数量 Qty	Description	备注 Remark
1	81401-00	燃油开关	1	Petcock assy	
2	GB96-85	大垫圈	1	Washer	
3	CB859-85	弹簧垫圈	2	Lock washer	
4	91202-00	油箱后部橡胶块	2	Rubber.Tank setting	
5	81101-00	安装板缓冲垫	1	Rubber.tank Mounting	
6	81102-00	缓冲垫衬套	2	Collar.tank setting	
7	81103-00	油箱总成	2	Tank.fuel	
8	81104-00	油箱后攀带组件	1	Band.rr.tank	
9	81105-00	通气管	1	Tube.fuel cap breather	
10	81106-00	异形橡皮	1	Grommet.shroud	
11	81107-00	油箱右护罩	2	Shroud set.r.tank	
12	81108-00	油箱左护罩	1	Shroud set.L.tank,	
13	81301-00	油箱盖	1	Cap assy.fuel tank	
14	GB/T41-2000	螺母	2	Nut	
15	81109-	油箱前安装板	2	Bracket.fr.fuel tank	
16	81110-00	燃油软管	2	Tube.fuel	
17	81111-00	攀带螺栓衬套	11	Collar.Battery(loewr)	
18	90501-00	护罩安装螺钉	2	Screw a.cowl setting	
19	90108-00	攀带螺栓	1	Screw.special	
20	GB/T5783-2000	护罩前安装螺栓	2	Bolt	
21	91401-00	紧圈	2	Clip.tube	
22	GB/T5783-2000	油箱前安装螺栓	2	Bolt	
23	GB5287-86	特大垫圈	2	Washer	
24	81112-00	前安装板衬套	4	Collar	
25	GB/T5783-2000	燃油开关螺栓	2	Bolt	
26	GB/T5783-2000	螺栓	4	Bolt	

