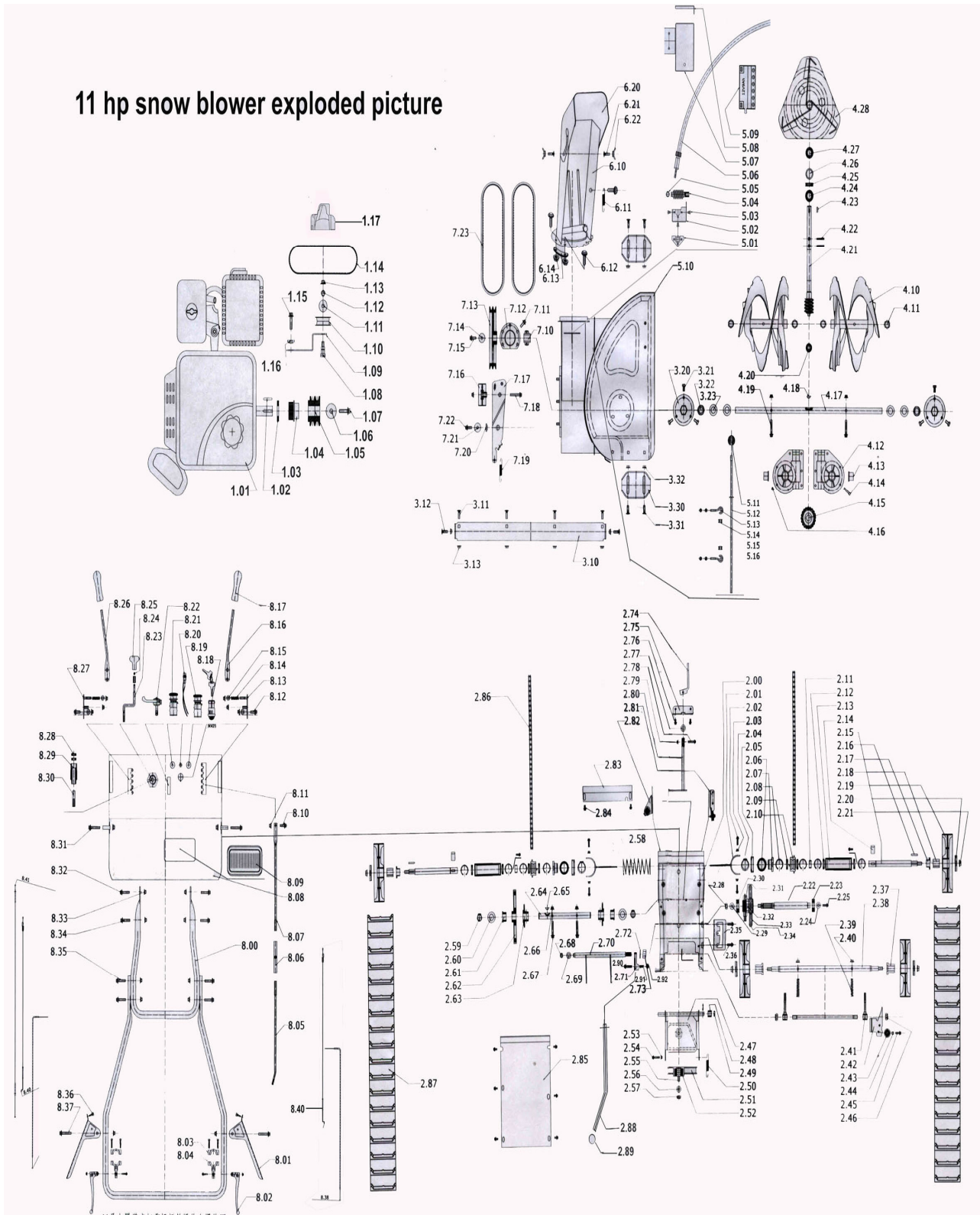


# NORDIK MOTOR CANDA

## SOUFLEUSE À NEIGE 13 FORCES

11 hp snow blower exploded picture



Item #	Description	QTÉ	CONCESSIONNAIRE	PDSF
1,01	182FE engine			
1,02	square key			
1,03	aluminium mat			
1,04	aluminium pully			
1,05	double pulley			
1,06	washer			
1,07	screw			
1,08	unnormal screw			
1,09	tension pulley holder			
1,10	small tension pully			
1,11	washer			
1,12	circlip			
1,13	lock nut			
1,14	5M synchro belt			
1,15	screw			
1,16	separate sleeve			
1,17	plastic cover			
2,00	frame			
2,01	paw holder			
2,02	screw			
2,03	nut			
2,04	circlip			
2,05	clutch paw(left)			
2,06	bearing			
2,07	clutch paw (right)			
2,08	circlip			
2,09	bearing			
2,10	sprocket			
2,11	spacer			
2,12	bearing			
2,13	base of clutch shaft			
2,14	plain key			
2,15	clutch alex			
2,16	semicircular key			
2,17	separate sleeve			
2,18	hexagonal sleeve			
2,19	plastic track wheel			
2,20	cover			
2,21	screw			
2,22	hexagon alex			
2,23	bearing			
2,24	plain cushion			

Item #	Description	QTÉ	CONCESSIONNAIRE	PDSF
2, 25	screw			
2, 28	lock nut			
2, 29	plain cushion			
2, 30	bearing			
2, 31	gear directive wheel			
2, 32	base of gear directive			
2, 33	friction wheel			
2, 34	friction rubber			
2, 35	bracket			
2, 36	screw			
2, 37	separate sleeve			
2, 38	wheel shaft			
2, 40	nut			
2, 41	crank			
2, 42	bracket			
2, 43	plastic pulley			
2, 44	spacer			
2, 45	screw			
2, 46	luck nut			
2, 47	friction board			
2, 48	separate sleeve			
2, 49	spacer			
2, 50	spring			
2, 51	drive board			
2, 52	bearing			
2, 53	luct nut			
2, 54	screw			
2, 55	unnormal screw			
2, 56	plain cushion			
2, 57	luck nut			
2, 58	clutch spring			
2, 59	circlip			
2, 60	plain cushion			
2, 61	separate sleeve			
2, 62	big sprockt			
2, 63	small sprocket			
2, 64	transmission shaft			
2, 65	semicircual key			
2, 66	nut			
2, 67	screw			
2, 68	circlip			
2, 69	plain cushion			
2, 70	lever fork			



Item #	Description	QTÉ	CONCESSIONNAIRE	PDSF
4,10	worm/auger			
4,11	rubber sleeve			
4,12	housing			
4,13	hexagon sleeve			
4,14	screw			
4,15	copper gear			
4,16	luck nut			
4,17	worm shaft			
4,18	semicircular key			
4,19	screw			
4,20	bearing			
4,21	shaft of turbine			
4,22	hatch pin			
4,23	pin key			
4,24	bearing			
4,25	bearing			
4,26	plain cushion			
4,27	oil seal			
4,28	fan			
5,01	bracket			
5,02	base of turbine			
5,03	screw			
5,04	turbine			
5,05	circlip			
5,06	soft shaft			
5,07	battery box			
5,08	batter box cover			
5,09	battery			
5,10	collector			
5,11	rubber cap			
5,12	clean pole			
5,13	holder			
5,14	rubber spacer			
6,10	chute			
6,11	spring			
6,12	screw			
6,13	chute mat			
6,14	luck nut			
6,20	upper chute			
6,21	screw			
6,22	fly nut			

Item #	Description	QTÉ	CONCESSIONNAIRE	PDSF
7,10	bearing			
7,11	screw			
7,12	bearing cover			
7,13	big double sprocket			
7,14	plain cushion			
7,15	screw			
7,16	tension pulley			
7,17	tension bracket			
7,18	screw			
7,19	spring			
7,20	sleeve			
7,21	plain cushion			
7,22	screw			
7,23	V-belt			
8,00	handle bar			
8,01	coupling lever			
8,02	clutch lever			
8,03	clutch holder			
8,04	clutch holder			
8,05	gear connect pole			
8,06	gear connector			
8,07	gear connector			
8,08	operation desk			
8,09	lamp			
8,10	screw			
8,11	nuts			
8,12	screw			
8,13	bracket			
8,14	spring			
8,15	plain cushion			
8,16	gear control handle			
8,17	rubber cap			
8,18	start key			
8,19	lamp key			
8,20	fuse			
8,21	stop key			
8,22	throttle key			
8,23	bent crank			
8,24	circlip			
8,25	rubber cap			
8,26	chute controlor			
8,27	bracket			

