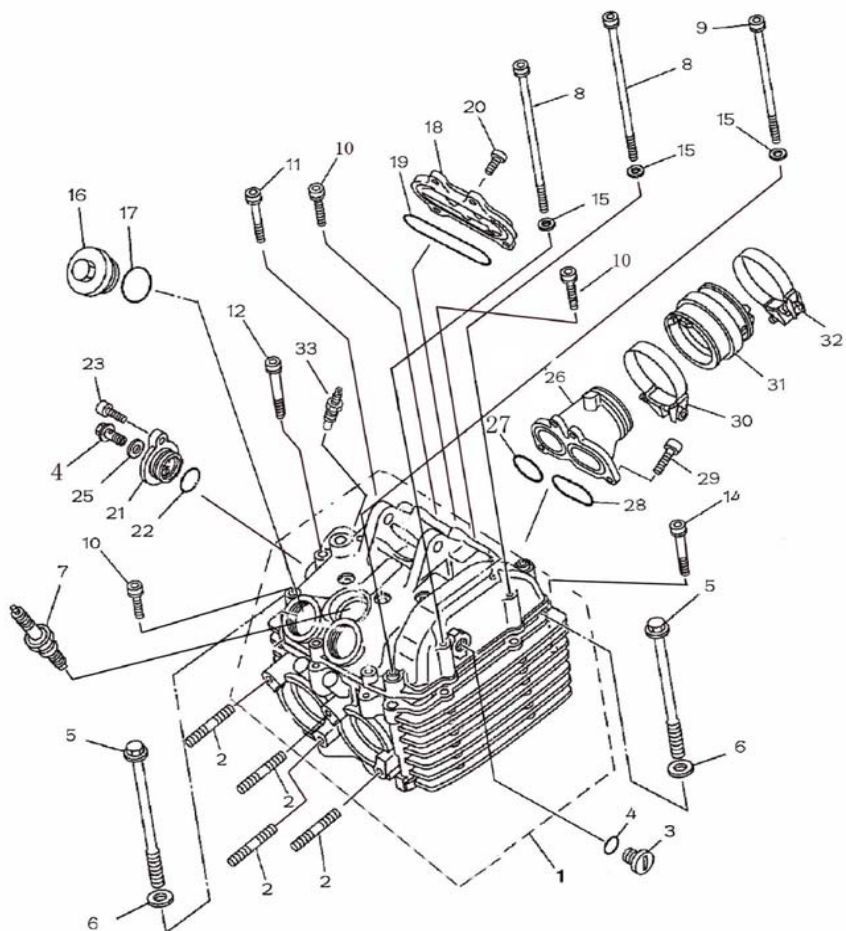


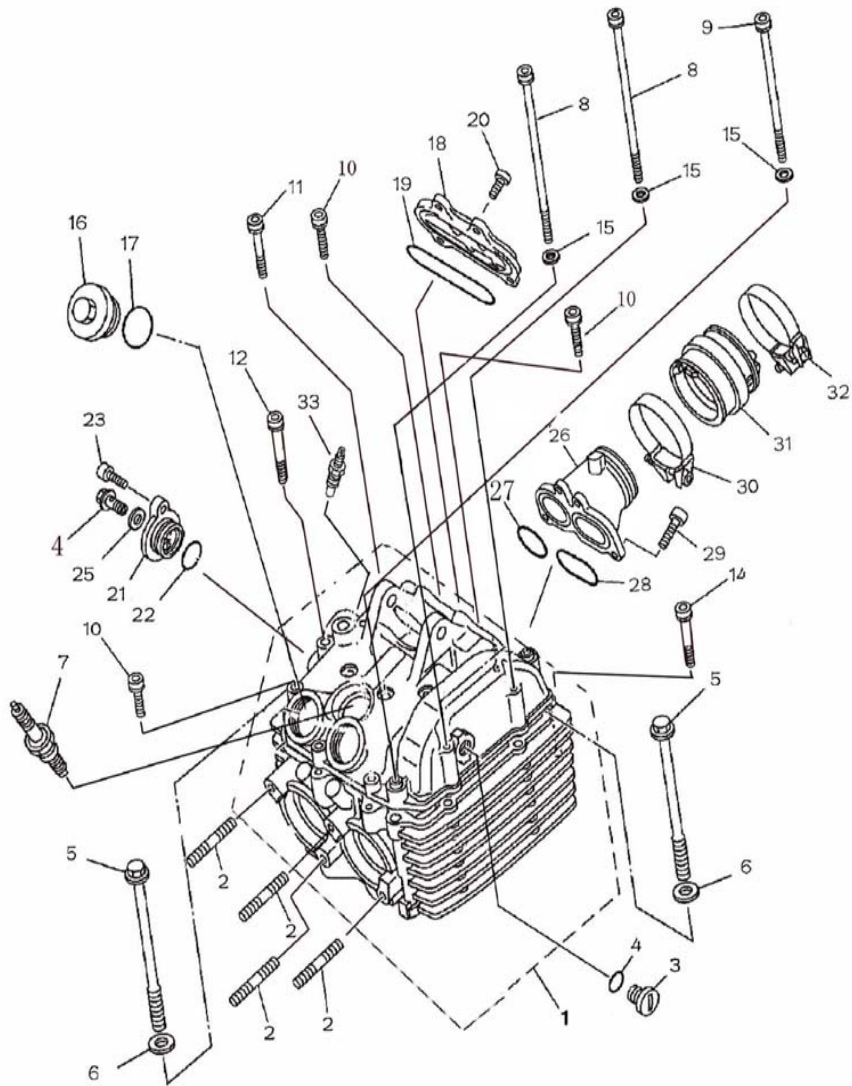
NORDIK MOTOR CANADA

NK 700 L PARTS CATALOGUE - ENGINE

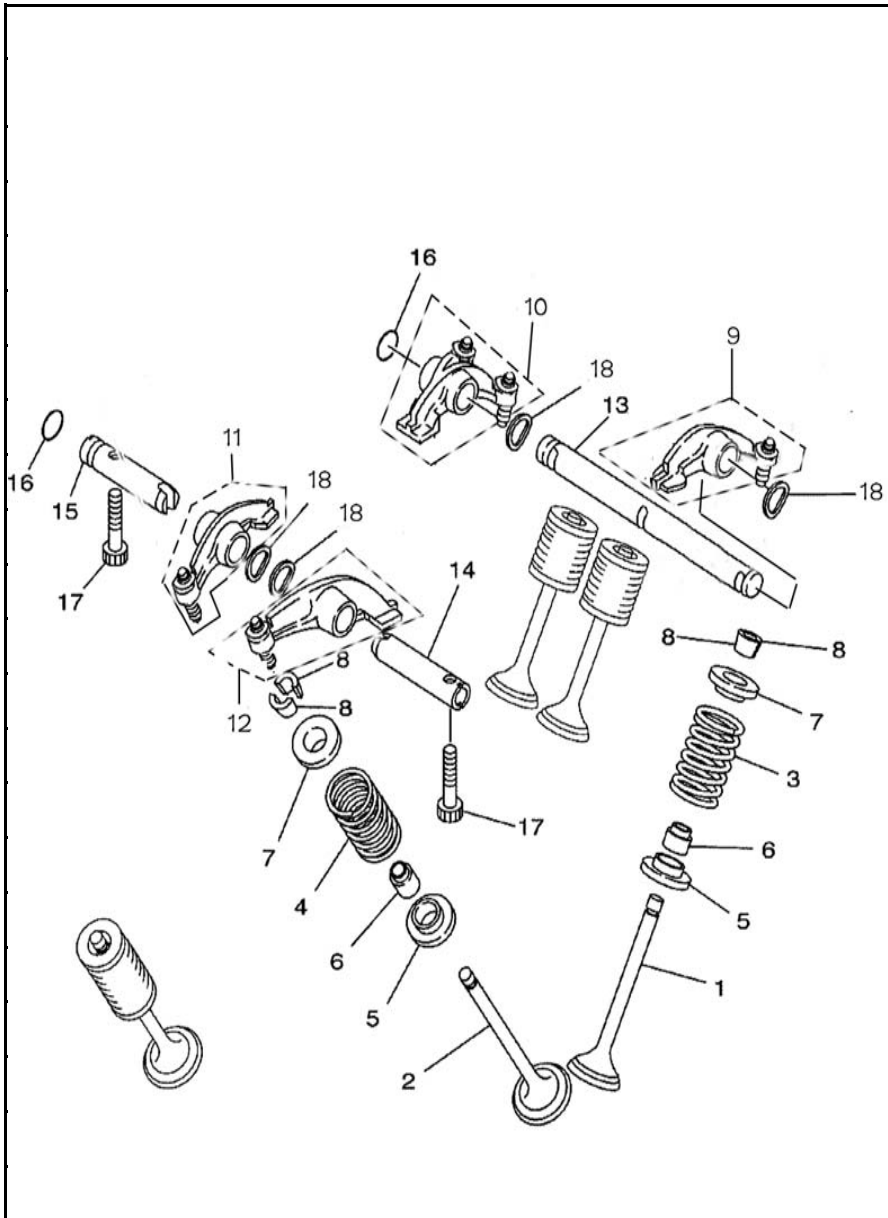
Model: 2008

		CYLINDER HEAD (1/2)	
No.	Part No.	Description	Unit price
1	12000-F39-0000	CYLINDER HEAD ASSY	
2	GB/T 899-1988	STUD BOLT M8x45	
3	12371-F39-0000	HAND HOLE COVER	
4	91217-F39-0000	O-RING 13.4x2.35	
5	90033-F39-0000	BOLT M9x109	
6	90601-F39-0000	WASHER 10x19x2	
7	33300-F39-0000	SPARK PLUG(NGK DPR8EA)	
8	GB/T 70.1-2000	BOLT M6x130	
9	GB/T 70.1-2000	BOLT M6x115	
10	GB/T 70.1-2000	BOLT M6x25	
11	GB/T 70.1-2000	BOLT M6x40	
12	GB/T 70.1-2000	BOLT M6x55	
13	GB/T 70.1-2000	BOLT M6x55	
14	GB/T 70.1-2000	BOLT M6x50	
15	90602-F39-0000	WASHER 6.5x11.3x1.6	
16	12362-F39-0000	OUTLET VALVE COVER	
17	91201-F39-0000	O-RIN 31.7x2.4	
18	12361-F39-0000	INLET VALVE COVER	

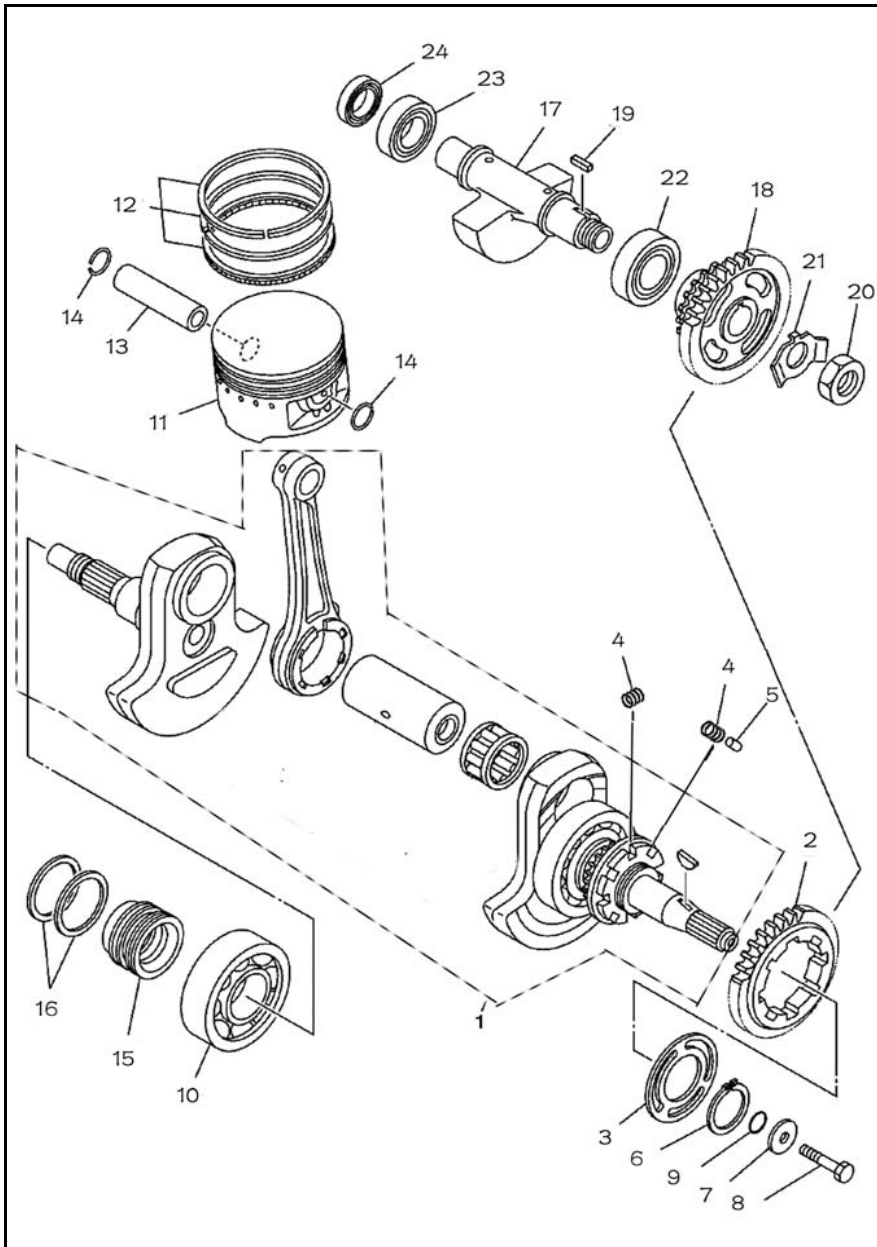




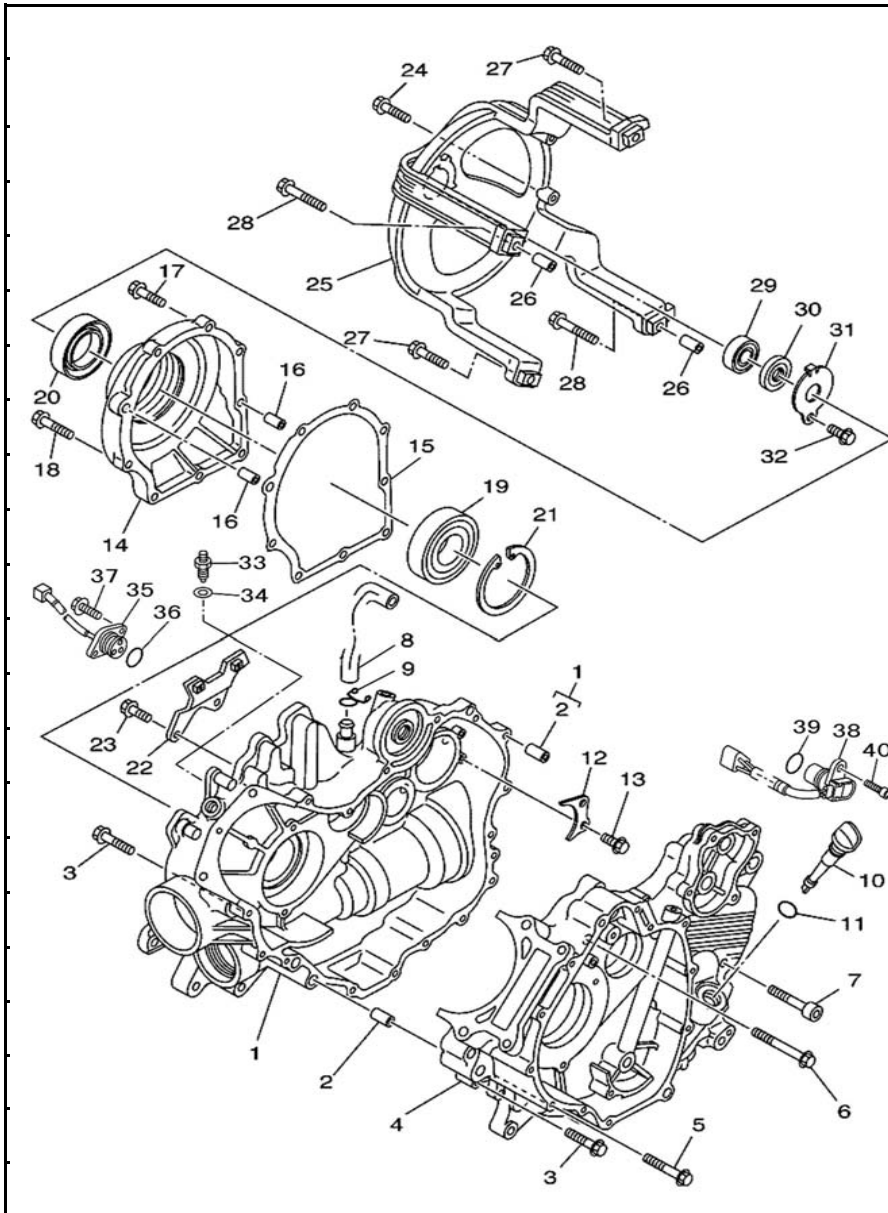
CYLINDER HEAD (2/2)			
No.	Part No.	Description	Unit price
19	91202-F39-0000	O-RING 71.5x3	
20	GB/T 70.1-2000	BOLT M6x18	
21	12211-F39-0000	CAP TENSIONER CASE	
22	91203-F39-0000	O-RING 18.7x2.45	
23	GB/T 70.1-2000	BOLT M6x20	
24	GB/T 16674-1996	BOLT M6x14	
25	90603-F39-0000	WASHER 6.2x13x1.5	
26	14800-F39-0000	INTAKE PIPE ASSY	
27	91204-F39-0000	O-RING 32.4x2	
28	91205-F39-0000	O-RING 43.6x2	
29	GB/T 70.1-2000	BOLT M6x20	
30	90401-F39-0000	CLAMP INLET PIPE	
31	14801-F39-0000	JOINT INLET PIPE	
32	90402-F39-0000	CLAMP INLET PIPE	
33	36540-F39-0000	WATER TEMPRATURE SENSOR	



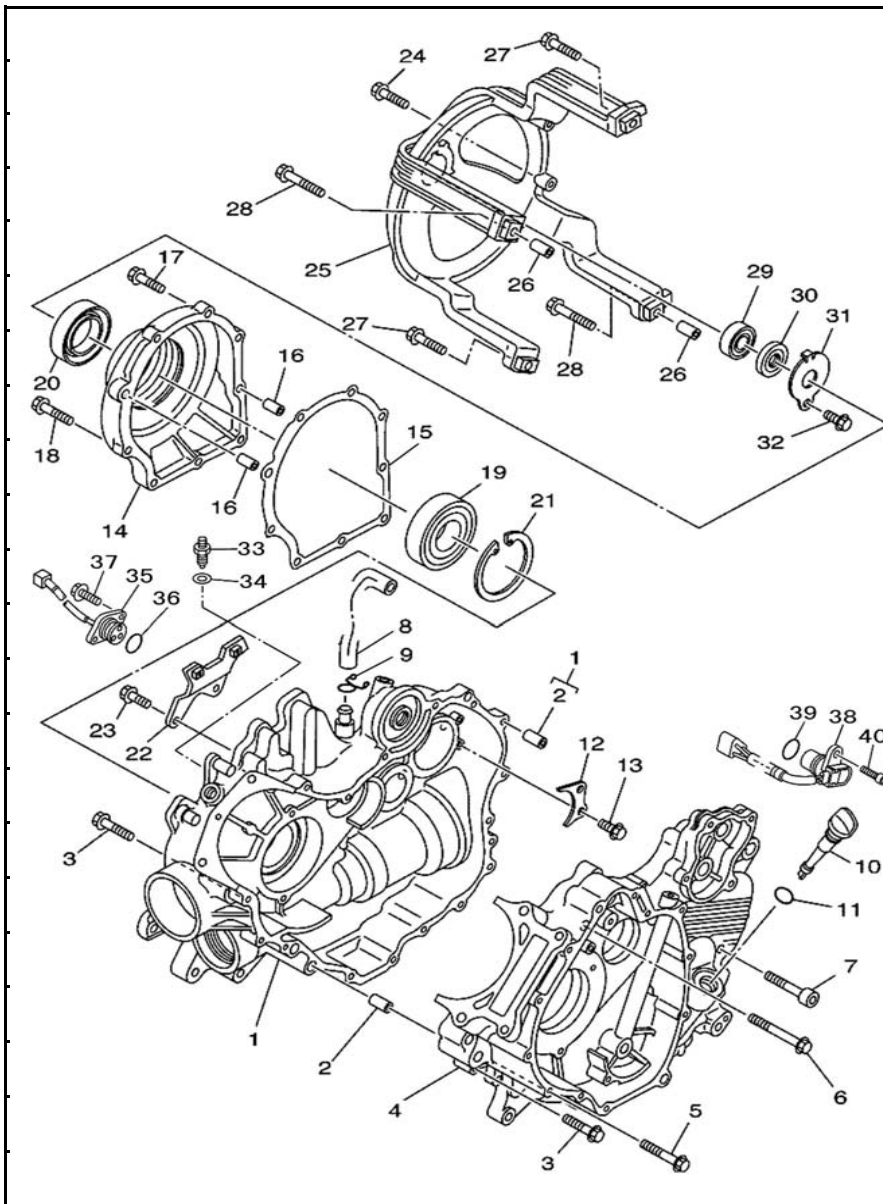
VALVE SWING ARM COMP & VALVE			
No.	Part No.	Description	Unit price
1	14711-F39-0000	VALVE INTAKE	
2	14721-F39-0000	VALVE EXHAUST	
3	14751-F39-0000	SPRING VALVE INNER	
4	14761-F39-0000	SPRING VALVE OUTER	
5	14775-F39-0000	SEAT VALVE SPRING	
6	12209-F39-0000	SEAL VALVE STEM	
7	14771-F39-0000	RETAINER VALVE SPRING	
8	14781-F39-0000	COTTER VALVE	
9	14430-F39-0000	INLET PIPE ROCKER ASSY I	
10	14440-F39-0000	INLET PIPE ROCKER ASSY II	
11	14450-F39-0000	OUTLET PIPE ROCKER ASSY I	
12	14460-F39-0000	OUTLET PIPE ROCKER ASSY II	
13	14451-F39-0000	SHAFT ROCKER I	
14	14471-F39-0000	SHAFT ROCKER III	
15	14461-F39-0000	SHAFT ROCKER II	
16	91215-F39-0000	O-RING 8.1x2.5	
17	GB/T 70.1-2000	BOLT M6x20	
18	14452-F39-0000	WASHER	



700 CRANKSHAFT PISTON			
No.	Part No.	Description	Unit price
1	13200-F39-0000	CRANKSHAFT ASSY	
2	13304-F39-0000	GEAR DRIVE	
3	13305-F39-0000	WASHER BEARING COVER	
4	13302-F39-0000	SPRING COMPRESSION	
5	13303-F39-0000	PIN DOWEL6x9.4	
6	90701-F39-0000	CIRCLIP35	
7	90618-F12-0000	WASHER 10x30x3.2	
8	GB/T 5783-2000	BOLT M10x40	
9	91207-F39-0000	O-RING 16.1x3.1	
10	GB/T 276-1994	BEARING6307	
11	13101-F39-0000	PISTON	
12	13120-F39-0000	PISTON RING COMP	
13	13111-F39-0000	PISTON PIN	
14	91301-F39-0000	CIRCLIP	
15	13401-F39-0000	SEAL RING SHEATH	
16	13402-F39-0000	SEAL CRANK	
17	13300-F39-0000	WEIGHT 1	
18	13320-F39-0000	BALANCER WEIGHT GEAR COMP.	
19	GB/T 1095-2003	KEY STRAIGHT B5x12.4	
20	GB/T6172.1-2000	NUT M18x1	
21	13321-F39-0000	WASHER, LOCK	
22	GB/T 276-1994	BEARING6305	
23	GB/T 276-1994	BEARING6304R	
24	91101-F39-0000	OIL SEAL 20x30x7	

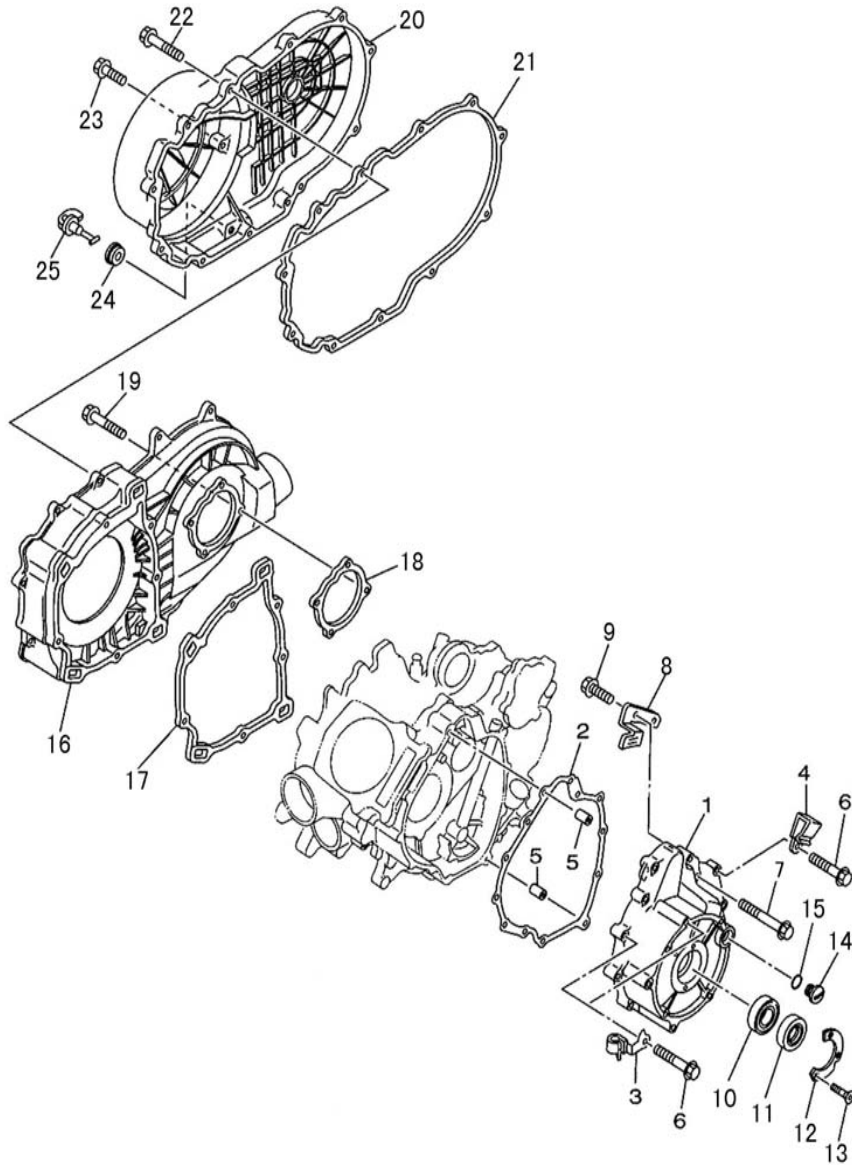


CRANKCASE			
No.	Part No.	Description	Unit price
1	11200-F39-0000	CRANKCASE ASSY	
2	90803-F11-0000	DOWEL PIN 10x15.7	
3	GB/T 16674-1996	BOLT M6x30	
4	11100-F39-0000	CRANKCASE ASSY	
5	GB/T 16674-1996	BOLT M6x40	
6	GB/T 5789-1986	BOLT M6x55	
7	GB/T 70.1-2000	BOLT M8x40	
8	91202-058-0000	PIPE BREATHER 1	
9	91503-058-0000	CLIP	
10	15651-F39-0000	PLUG OIL LEVEL	
11	91216-F39-0000	O-RING 20x2.3	
12	11111-F39-0000	PLATE BEARING COVER	
13	GB/T 16674-1996	BOLT M6x14	
14	21240-F39-0000	HOUSING BEARING 1	
15	21241-F39-0000	GASKET CARBURETOR COVER 2	
16	90803-F11-0000	DOWEL PIN 10x16	
17	GB/T 16674-1996	BOLT M6x30	
18	GB/T 16674-1996	BOLT M6x40	
19	GB/T 276-1994	BEARING16010	
20	91102-F39-0000	OIL SEAL35x65x8	

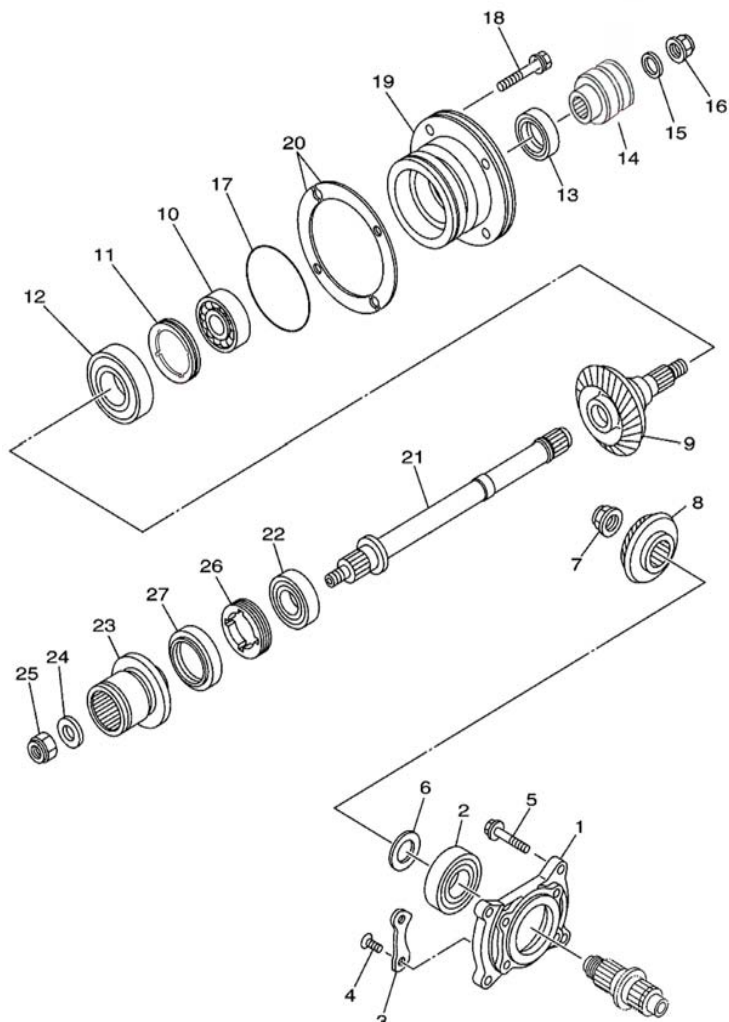


CRANKCASE (2/2)

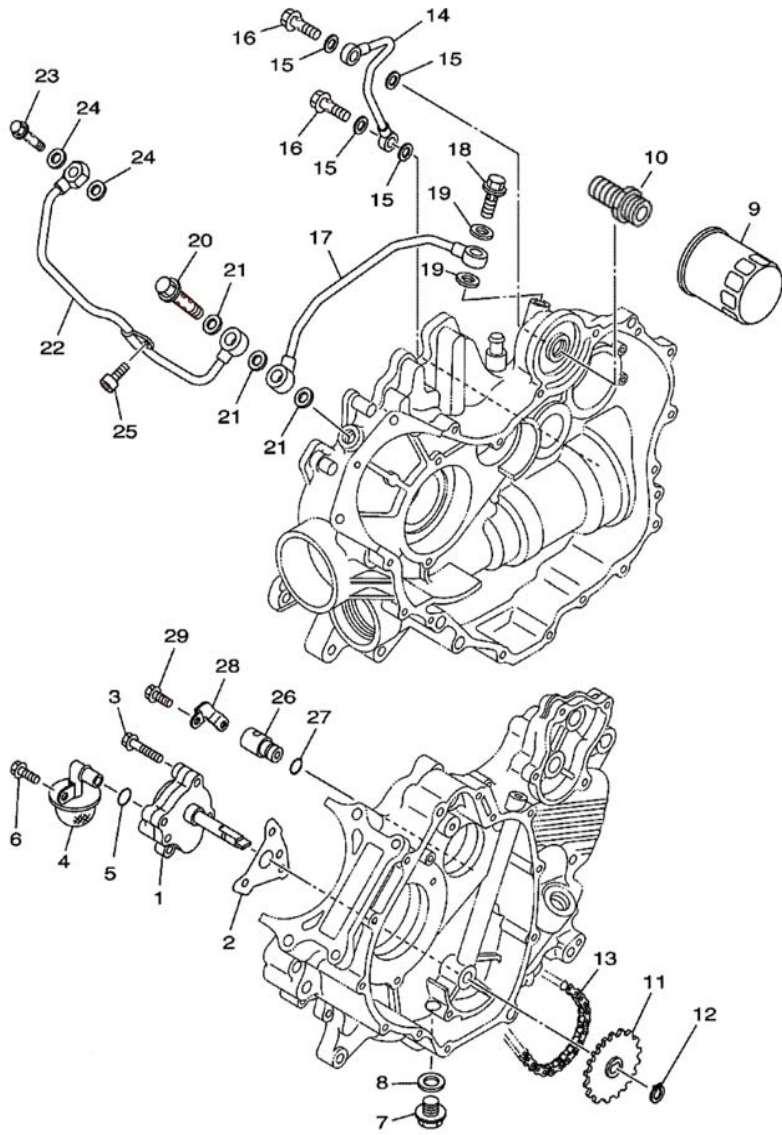
No.	Part No.	Description	Unit price
21	90704-F39-0000	CIRCLIP 80	
22	17115-F39-0000	BRACKET	
23	GB/T 5789-1986	BOLT M6×16	
24	GB/T 5789-1986	BOLT M6×20	
25	11330-F39-0000	HOUSING, BEARING	
26	90801-F39-0000	DOWEL PIN 10×16	
27	GB/T 5789-1986	BOLT M6×30	
28	GB/T 5789-1986	BOLT M6×40	
29	GB/T 276-1994	BEARING6201RD	
30	91101-F12-0000	OIL SEAL 12×32×6	
31	11331-F12-0000	PLATE BEARING COVER	
32	GB/T 16674-1996	BOLT M6×12	
33	37180-F12-0000	GEAR SWITCH	
34	90603-F12-0000	WASHER 10×16×1	
35	37120-F39-0000	GEAR SHOW ASSY	
36	91208-F39-0000	O-RING 29.6×2.4	
37	GB/T 9074.14-88	BOLT M6×16	
38	36500-F39-0000	SPEED SENSOR	
39	91209-F39-0000	O-RING 14.8×2.45	
40	GB/T 70.1-2000	BOLT M6×16	



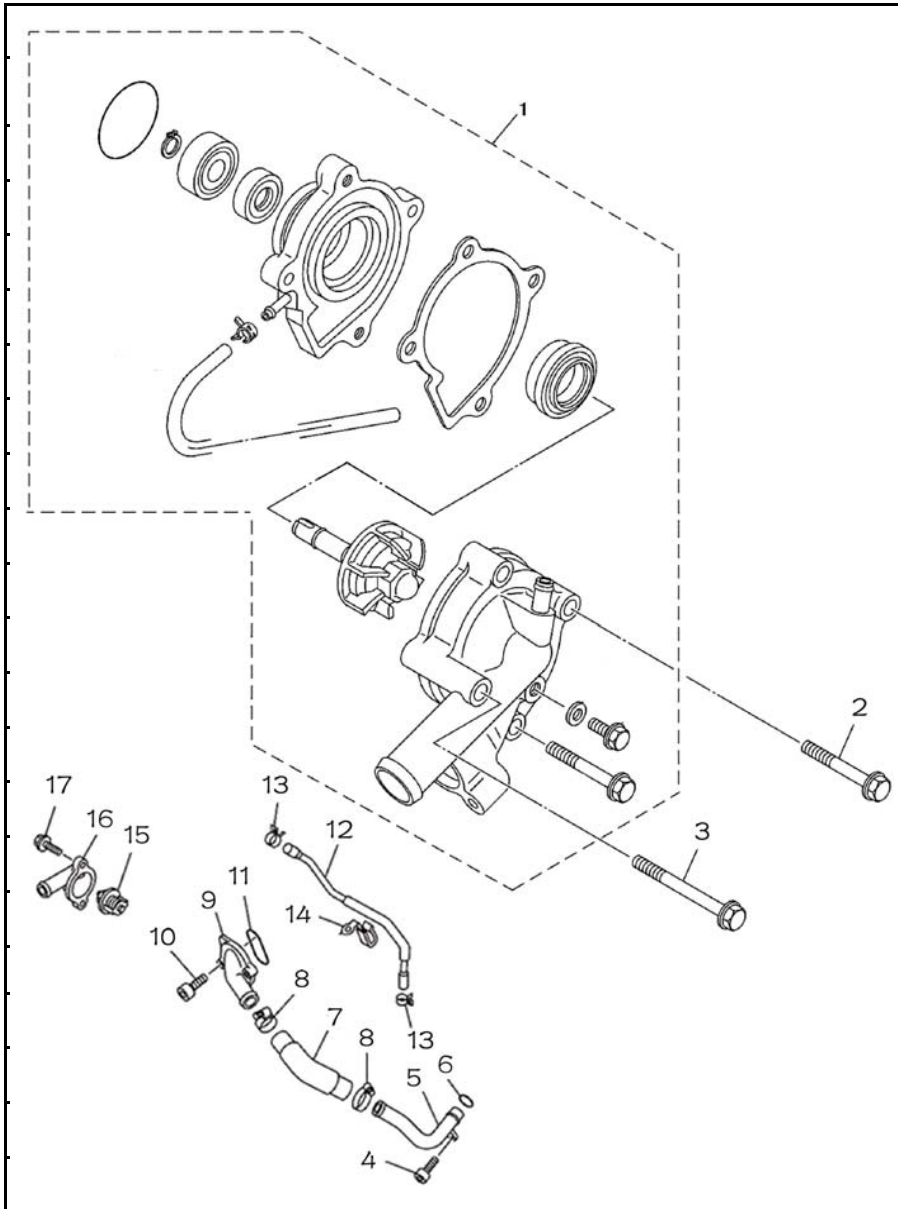
CRANKCASE COVER 1 (1/2)			
No.	Part No.	Description	Unit price
1	11321-F39-0000	COVER CRANKCASE 1	
2	11323-F39-0000	GASKET CRANKCASE COVER 1	
3	91501-F39-0000	CLAMP	
4	91601-F39-0000	CLAMP	
5	90803-F11-0000	PIN DOWEL	
6	GB/T 16674-1996	BOLT M6x30	
7	GB/T 16674-1996	BOLT M6x40	
8	11322-F39-0000	PLATE	
9	GB/T 16674-1996	BOLT M6x14	
10	GB/T 276-1994	BEARING60/28	
11	91103-F12-0000	OIL SEAL 28x52x8.2	
12	11324-F11-0000	WASHER THRUST	
13	GB/T819.1-2000	SCREW M5x16	
14	11325-F19-0000	HAND HOLE COVER	
15	91209-F39-0000	O-RING 13.4x2.35	
16	11450-F39-0000	COVER CRANKCASE 2	
17	11411-F39-0000	CLUTCH CRANKCASE CUSHION I	
18	11412-F39-0000	CLUTCH CRANKCASE CUSHION II	
19	GB/T 5789-1986	BOLT M6x30	
20	11400-F39-0000	COVER CRANKCASE 3	



MIDDLE DRIVE GEAR (1/2)			
No.	Part No.	Description	Unit price
1	22140-F39-0000	HOUSING BEARING	
2	GB/T 276-1994	BEARING6305	
3	22142-F12-0000	PLATE BEARING COVER	
4	GB/T 819.2-1997	SCREW M8x24	
5	GB/T 5789-1986	BOLT M6x30	
6	90606-F39-0000	WASHER 26x38x (0.10~0.60)	
7	GB/T 6172.1-2000	NUT M22	
8	22141-F39-0000	MIDDLE GEAR COMP.	
9	22150-F39-0000	SIDE WIMBLE GEAR	
10	GB/T 276-1994	BEARING6207	
11	22158-F39-0000	LOCK RING M60	
12	GB/T 276-1994	BEARING63/22	
13	91106-F12-0000	OIL SEAL 30x46x8	
14	22190-F39-0000	REAR DRIVE SHAFT	
15	90607-F39-0000	WASHER 16.5x28x4	
16	90301-F39-0000	NUT M16	
17	91201-F11-0000	O-RING 88x2.8	
18	GB/T 9074.14-88	BOLT M8x30	
19	22151-F39-0000	HOUSING, BEARING	
20	22152-F39-0000	WASHER 26x38x (0.10~0.60)	



OIL PUMP (1/2)			
No.	Part No.	Description	Unit price
1	15100-F39-0000	OIL PUMP ASSY	
2	15101-F39-0000	GASKET PUMP COVER	
3	GB/T 16674-1996	BOLT M6x40	
4	15300-F39-0000	STRAINER HOUSING ASSY	
5	91210-F39-0000	O-RING14x2.3	
6	GB/T 16674-1996	BOLT M6x14	
7	GB/T 5789-1986	BOLT M14x1.5-6H-16	
8	90612-F39-0000	WASHET 14x22x1	
9	15200-F39-0001	ELEMENT ASSY OIL CLEANER	
10	15201-F39-0001	BOLT UNION	
11	15202-F39-0000	SPROCKET DRIVEN	
12	90703-F39-0000	CIRCLIP 11	
13	04CH-70	CHAIN (DID25SD DHA)	
14	15301-F39-0000	PIPE DELIVERY 1	
15	90613-F39-0000	WASHET 8.4x15x2	
16	15304-F39-0000	BOLT I M8x20	
17	15302-F39-0000	PIPE DELIVERY 2	
18	15305-F39-0000	BOLT II M14x28.5	
19	90609-F39-0000	WASHET 14x20x1.5	
20	15307-F39-0000	BOLT IV M14x50	



WATER PUMP			
No.	Part No.	Description	Unit price
1	19700-F39-0000	WATER PUMP ASSY	
2	GB/T 16674-1996	BOLT M6×45	
3	GB/T 16674-1996	BOLT M6×65	
4	GB/T 70.1-2000	BOLT M6×10	
5	19272-F39-0000	WATER PIPE II	
6	91213-F39-0000	O-RING 20.7×2.6	
7	19273-F39-0000	WATER PIPE III	
8	90405-F39-0000	WATER PIPE CLIP	
9	19210-F39-0000	CYLINDER INLET WATER JOINT	
10	GB/T 70.1-2000	BOLT M6×20	
11	91214-F39-0000	O-RING 33.4×2.4	
12	19271-F39-0000	WATER PIPE I	
13	90404-F39-0000	CLIP II	
14	91502-F39-0000	PIPE CLIP II	
15	19400-F39-0000	SAVE TEMPRATURE	
16	19410-F39-0000	SAVE TEMPRATURE COVER	
17	GB/T 16674-1996	BOLT M6×20	

